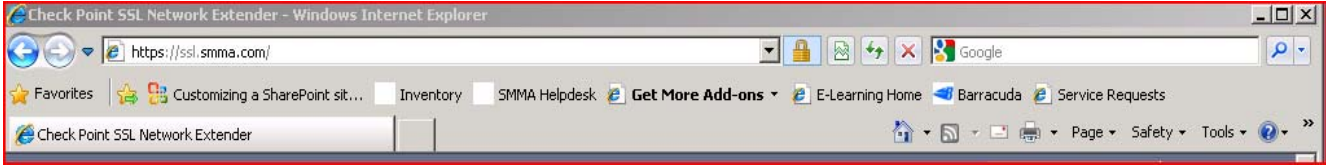
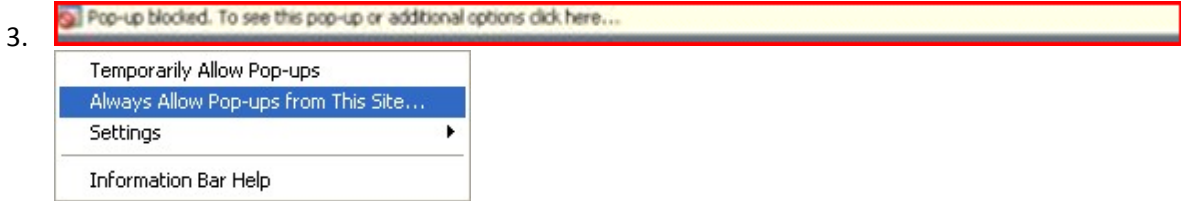


Instructions for remote access connection through SSL.SMMA.COM and Checkpoint SSL Network Extender.

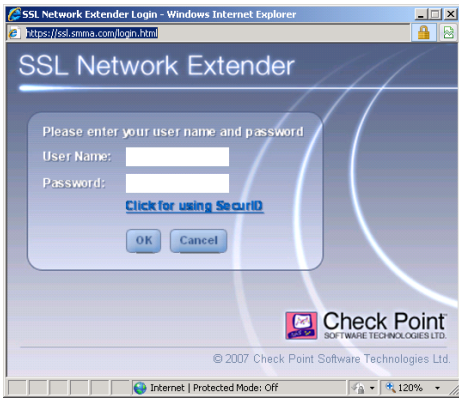
- 1. The URL is <https://ssl.smma.com>



- 2. Allow any popup and add ssl.smma.com to your list of trusted sites.



- 4. Enter your username and password:



- 5. You will need to right click and select install add on when the yellow bar appears.



- 6. Click OK Yes to install any ActiveX control and accept certificates.
- 7. To access the intranet click <http://intranet.i-smma.com> and when prompted for username enter
- 8. i-smma\yourusername and password .



- 9. You can now view the Network folders - Click on **Tools**, Under **Network Services**, **CAM21 File server**.